

Electrical Abbreviations & Symbol Legend

Abbreviations

A	AMPERE
AC	ALTERNATING CURRENT, AIR CONDITIONING UNIT
AHJ	AUTHORITY HAVING JURISDICTION
AIC	AVAILABLE INTERRUPTING CAPACITY
AF	AMPERE FRAME / AMPERE FUSED
AFC	ABOVE FINISHED CEILING
AFF	ABOVE FINISHED FLOOR
AFG	ABOVE FINISHED GRADE
ANSI	AMERICAN NATIONAL STANDARDS INSTITUTE
ARMS	ARC FLASH REDUCTION MAINTENANCE SYSTEM
AT	AMPERE TRIP
AV	AUDIO / VIDEO
AWG	AMERICAN WIRE GAUGE
BAS	BUILDING AUTOMATION SYSTEM
BFG	BELOW FINISHED GRADE
BLDG	BUILDING
C	CONDUIT
CAT	CATEGORY
CB	CIRCUIT BREAKER
CFCI	CONTRACTOR FURNISHED, CONTRACTOR INSTALLED
CFOI	CONTRACTOR FURNISHED, OWNER INSTALLED
CKT	CIRCUIT
CPT	CONTROL POWER TRANSFORMER
CR	CONTROL RELAY
CU	COPPER
dB	DECIBAL
DC	DIRECT CURRENT
DIM	DIMENSION
DIV	DIVISION
DTL	DETAIL
DWG	DRAWING
EL	ELEVATION
EMT	ELECTRICAL METALLIC TUBING
EOLR	END OF LINE RESISTOR
FACP	FIRE ALARM CONTROL PANEL
FF	FINISH FLOOR
FLA	FULL LOAD AMPERES
FT	FOOT, FEET
FBO	FURNISHED BY OTHERS
G, GND	GROUND
GFCI	GROUND FAULT CIRCUIT INTERRUPTER
HH	HAND HOLE
HP	HORSEPOWER
ID	IDENTIFICATION
IDC	INITIATING DEVICE CIRCUIT
IDF	INTERMEDIATE DISTRIBUTION FRAME
IEEE	INSTITUTE OF ELECTRICAL AND ELECTRONICS ENGINEERS
IG	ISOLATED GROUND
IT	INFORMATION TECHNOLOGY
JB	JUNCTION BOX
KAIC	THOUSAND AMPS INTERRUPTING CURRENT
KCMIL	THOUSAND CIRCULAR MILS
KVA	KILOVOLT-AMPERE
KW	KILOWATT
LAN	LOCAL AREA NETWORK
LED	LIGHT EMITTING DIODE
LS	LIMIT SWITCH
LSI	ELECTRONIC TRIP UNIT ADJUSTABLE LONG TIME DELAY, SHORT TIME DELAY, INSTANTANEOUS TRIP
LSIG	ELECTRONIC TRIP UNIT WITH ADJUSTABLE LONG TIME DELAY, SHORT TIME DELAY, INSTANTANEOUS TRIP, AND GROUND FAULT
LV	LOW VOLTAGE
MCA	MINIMUM CIRCUIT AMPACITY
MCC	MOTOR CONTROL CENTER
MCP	MOTOR CIRCUIT PROTECTOR
MDF	MAIN DISTRIBUTION FRAME
MHz	MEGAHERTZ
MISC	MISCELLANEOUS
MLO	MAIN LUGS ONLY
MCCP	MAXIMUM OVERCURRENT PROTECTION
N	NEUTRAL
NAC	NOTIFICATION APPLIANCE CIRCUIT
N/A	NOT APPLICABLE
NC	NORMALLY CLOSED
NEC	NATIONAL ELECTRICAL CODE
NEMA	NATIONAL ELECTRICAL MANUFACTURERS ASSOCIATION
NL	NIGHT LIGHT
NO	NORMALLY OPEN
NTS	NOT TO SCALE
OC	ON CENTER
OFCI	OWNER FURNISHED, CONTRACTOR INSTALLED
OFOI	OWNER FURNISHED, OWNER INSTALLED
Ø	PHASE
PB	PULL BOX, PANIC BUTTON, PUSH BUTTON
PE	PHOTO EYE
PNL	PANEL
POE	POWER OVER ETHERNET
PTZ	PAN, TILT, ZOOM
RF	RADIO FREQUENCY
RFI	REQUEST FOR INFORMATION
SPD	SURGE PROTECTION DEVICE
STD	STANDARD
SW	SWITCH
TM	THERMAL MAGNETIC CIRCUIT BREAKER
TBD	TO BE DETERMINED
TV	TELEVISION / MONITOR OUTLET
TVSS	TRANSIENT VOLTAGE SURGE SUPPRESSOR
TYP	TYPICAL
UH	UNIT HEATER
UG	UNDERGROUND
UL	UNDERWRITERS LABORATORIES
UPS	UNINTERRUPTIBLE POWER SUPPLY
UON	UNLESS OTHERWISE NOTED
USB	UNIVERSAL SERIAL BUS
V	VOLTS, VOLTAGE
VA	VOLT-AMPERE

General Electrical Notes

- ALL LIGHTING BRANCH CIRCUITS SHALL BE 2#10, 1#10G IN 3/4" CONDUIT, UON.
- ALL 20-AMP RECEPTACLE AND HARDWIRED BRANCH CIRCUITS SHALL BE 2#12, 1#12G IN 3/4" CONDUIT, UON.
- ALL EXIT SIGNS SHALL BE WIRED TO THE LOCAL LIGHTING BRANCH CIRCUIT AHEAD OF ALL SWITCHING, UON.
- PROVIDE 0-10V DIMMING CONDUCTORS TO ALL LUMINAIRES WHICH ARE CONTROLLED BY 0-10V DIMMERS SHOWN ON THE DRAWINGS.

Drawing Symbol Variables

3	THREE WAY SWITCH.
4	FOUR WAY SWITCH.
#J	QUANTITY OF JACKS AND HORIZONTAL CABLES.
J = CAT6, JA = CAT6A, JE = CAT5E	
+XX	MOUNTING UNITS EXPRESSED IN INCHES TO CENTERLINE ABOVE FINISHED FLOOR OR GRADE.
C	MOUNTED HORIZONTALLY AT 4" ABOVE COUNTERTOP.
CL	CLOCK.
DR	DUAL RELAY.
E	RED EMERGENCY SWITCH.
EL	ELEVATOR RECALL.
ETR	EXISTING DEVICE SHALL REMAIN.
G	GLASS BREAK SENSOR.
K	KEYED SWITCH.
LF	LOW FREQUENCY.
LV	LOW VOLTAGE SWITCH.
M	MOTOR RATED TOGGLE SWITCH.
NEX	REPLACE EXISTING WIRING DEVICE AND FACEPLATE WITH NEW. BACK BOX AND CONDUIT SHALL REMAIN.
O	INTEGRAL OCCUPANCY SENSOR.
P	ADA PHONE. VERIFY HEIGHT WITH ARCHITECT / OWNER.
REX	REMOVE EXISTING DEVICE / EQUIPMENT.
TK	MOUNTED IN TOE KICK OF CASEWORK.
TV	MOUNTED ADJACENT TO TV AT 60" AFF, UON.
V	VANDAL RESISTANT.
WG	WIREGUARD.
WP	WEATHERPROOF.

Annotation

(N)	INDICATES NEW EQUIPMENT.
(E)	INDICATES EXISTING EQUIPMENT TO REMAIN.
(D)	INDICATES EXISTING EQUIPMENT TO BE DEMOLISHED.
(RR)(RD)	INDICATES EXISTING EQUIPMENT OR DEVICE TO BE REMOVED AND REINSTALLED.
PXXX	CONDUIT & CONDUCTOR CALLOUT. REFER TO CONDUIT & CONDUCTOR SCHEDULE.
XX	KEYED NOTE CALLOUT. REFER TO CORRESPONDING SHEET KEYNOTES.
XX	KEYED NOTE CALLOUT. REFER TO CORRESPONDING SHEET KEYNOTES.
XX	KEYED NOTE CALLOUT. REFER TO CORRESPONDING SHEET KEYNOTES.
XX-XX	MECHANICAL EQUIPMENT CALLOUT. REFER TO MECHANICAL EQUIPMENT CONNECTION SCHEDULE.
X EX-XX	DETAIL CALLOUT. REFER TO DETAIL AND SHEET AS INDICATED ON CALLOUT.
XX-XX*	FIXTURE MOUNTING CALLOUT. HEIGHT ABOVE FINISHED FLOOR (A.F.F.)
XXXXX	EQUIPMENT CALLOUT. REFER TO NEMA CONNECTION SCHEDULE.
X EXXX	SECTION CALLOUT. REFER TO DETAIL AND SHEET AS INDICATED ON CALLOUT.
#(EX-XX)#	ELEVATION CALLOUT. REFER TO DETAIL AND SHEET AS INDICATED ON CALLOUT.

Raceways

	CONDUIT AND/OR CONDUCTORS INSTALLED ABOVE GRADE, CONCEALED IN WALL OR CEILING SPACE.
	CONDUIT AND/OR CONDUCTORS INSTALLED BELOW GRADE, BELOW SLAB.
	CONDUIT TURNED DOWN.
	CONDUIT TURNED UP.
	CONDUIT STUBBED AND CAPPED.
	CONDUIT DIRECT CONNECTION TO EQUIPMENT.
	FLEXIBLE CONNECTION TO EQUIPMENT.
	CONDUIT / WIRING CONTINUATION.
	HOMERUN TO PANELBOARD.
	CABLE TRAY. SIZE AND TYPE AS INDICATED ON DRAWINGS.

Power Distribution

	DUPLEX RECEPTACLE, MOUNTED AT 18" AFF, UON.
	SIMPLEX RECEPTACLE, MOUNTED AT 18" AFF, UON.
	QUADPLEX RECEPTACLE, MOUNTED AT 18" AFF, UON.
	GFCI DUPLEX RECEPTACLE, MOUNTED AT 18" AFF, UON.
	GFCI QUADPLEX RECEPTACLE, MOUNTED AT 18" AFF, UON.
	TAMPER RESISTANT DUPLEX RECEPTACLE, MOUNTED AT 18" AFF, UON.
	TAMPER RESISTANT QUADPLEX RECEPTACLE, MOUNTED AT 18" AFF, UON.
	NEMA SPECIAL RECEPTACLE, MOUNTED AT 18" AFF, UON. NEMA CONFIGURATION AS INDICATED.
	SIDE HATCHED RECEPTACLE, TO BE WIRED TO SWITCHED CIRCUIT.
	CENTER HATCHED RECEPTACLE TO BE WIRED TO EMERGENCY CIRCUIT.
	RECEPTACLE MOUNTED ON CEILING.
	RECEPTACLE MOUNTED IN-COUNTER.
	DISCONNECT SWITCH.
	FUSED DISCONNECT SWITCH.
	ENCLOSED CIRCUIT BREAKER.
	COMBINATION STARTER.
	FLOORBOX COMBINATION POWER & DATA.
	FLOORBOX POWER.
	POKETHRU COMBINATION POWER & DATA.
	POKETHRU POWER.
	POWER POLE.
	PANELBOARD SURFACE MOUNT.
	PANELBOARD FLUSH MOUNT.
	MAIN DISTRIBUTION PANEL.
	UTILITY CT METER.
	UTILITY TRANSFORMER.
	ETHERNET OUTLET MOUNTED AT 18" AFF, UON.
	COAXIAL OUTLET MOUNTED AT 18" AFF, UON.
	PHONE OUTLET MOUNTED AT 18" AFF, UON.
	LOW VOLTAGE OUTLET CEILING MOUNTED.
	WIRELESS ACCESS POINT CEILING MOUNTED.
	WIRELESS ACCESS POINT WALL MOUNTED.
	DIGITAL CLOCK.
	FLOORBOX DATA.
	POKETHRU DATA.
	IT RACK.
	VERTICAL WIRE MANAGEMENT.

Low Voltage

Miscellaneous

	JUNCTION BOX (ROUND, SQUARE).
	THERMOSTAT.
	RELAY.
	CORD REEL.
	MOTOR / EXHAUST FAN.
	CEILING FAN.
	UTILITY POLE.
	WEATHERHEAD.
	GROUND ROD.
	GROUND ROD WITH TEST WELL.
	SURFACE RACEWAY / WIREMOLD.
	FIRE RATED BACKBOARD.
	GROUND BUS BAR.

LANDIS CONSULTING
Salem
503-584-1576
www.landisconsulting.com



In the event conflicts are discovered between the original signed and sealed documents prepared by the Architect and/or their Consultants, and any copy of the documents transmitted by mail, fax, electronically or otherwise, the original signed and sealed documents shall govern.

JOB NO. 2024.0021

DATE APRIL 19, 2024

DRAWN SR

REVISIONS



ARCHITECTURE COMMUNITY
1100 Liberty Street SE
Suite 200
Salem, OR 97302
P: 503.581.4114
www.ccocog.com

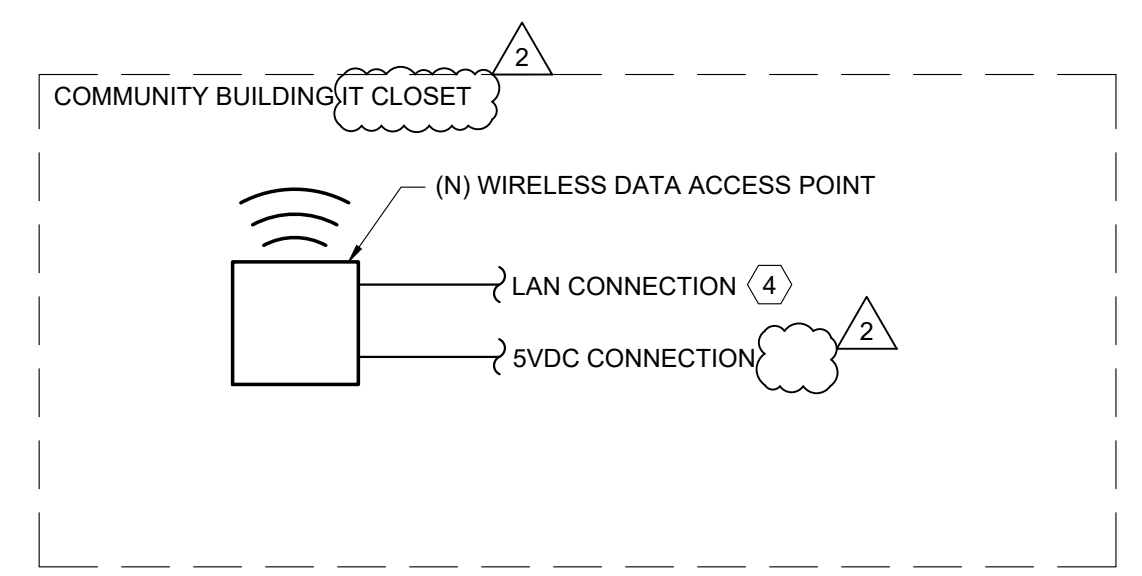
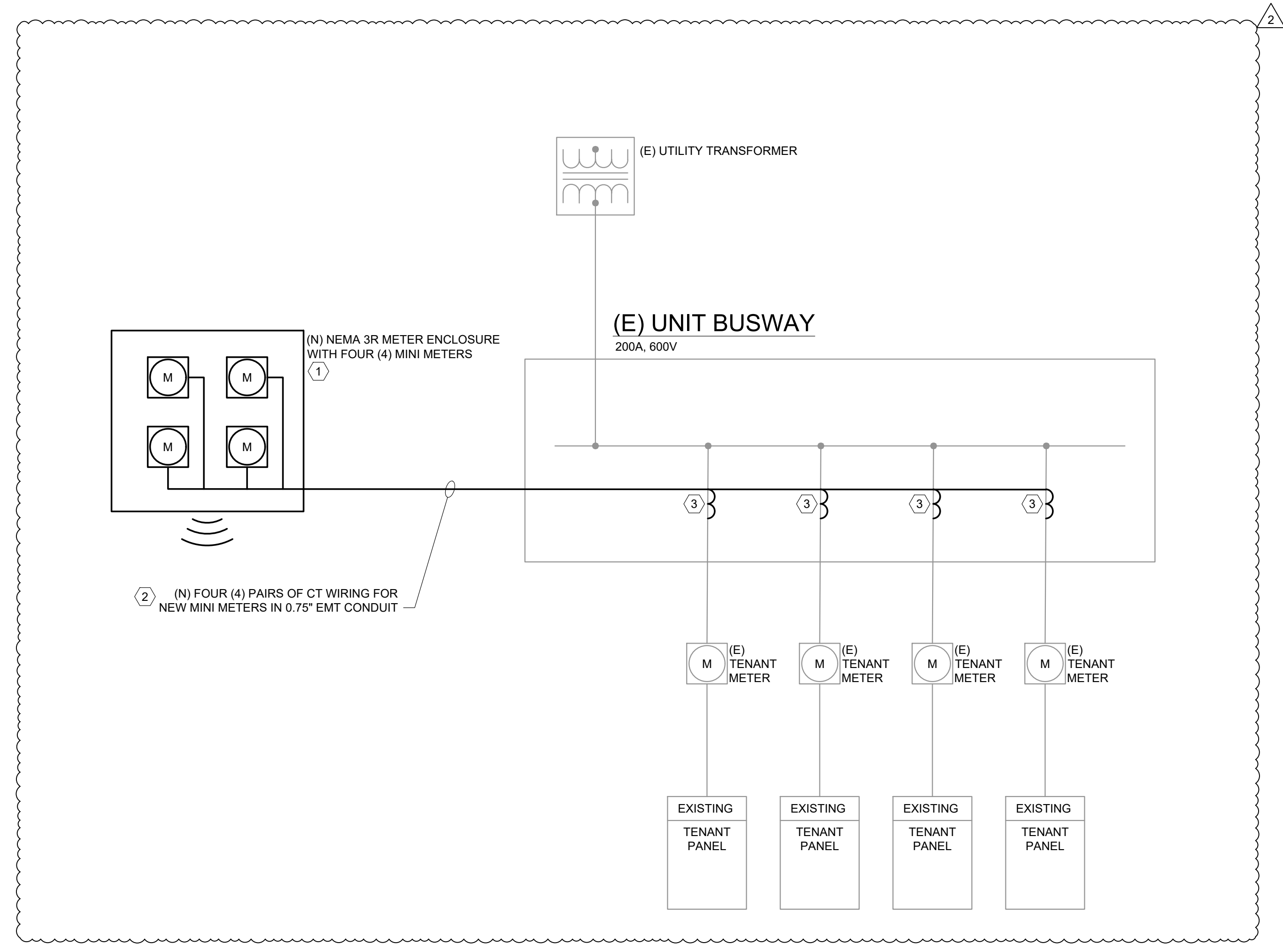
WEST VALLEY HOUSING AUTHORITY
PIONEER VILLAGE COMMUNITY CENTER

Electrical Abbreviations & Symbol Legend

3060 CENTER ST NE
SALEM, OR 97301

SHEET
E0.1

- SHEET KEY NOTES**
1. NEW MINI-METERS TO BE INSTALLED IN NEMA 3R ENCLOSURE MOUNTED HIGH ON STEM WALL NEAR EAVE. 0.75" CONDUIT EMT CONDUIT SHALL BE ROUTED FROM NEW ENCLOSURE TO EXISTING BUSWAY MOUNTED IN THE MECHANICAL CORE OF EACH 4-FLEX UNIT FOR CT WIRING.
 2. ROUTE NEW 0.75" CONDUIT FROM EXTERIOR ENCLOSURE UP INTO THE ACCESSIBLE ATTIC SPACE THAN OVER TO THE MECHANICAL CORE AND DOWN INTO THE EXISTING BUSWAY. PROVIDE CT WIRING FOR LENGTH REQUIRED.
 3. INSTALL NEW SOLID CORE CT'S ON EACH PANEL FEEDER TAP WIRING INSIDE EXISTING BUSWAY ENCLOSURE. COORDINATE DE-ENERGIZING OF UNIT WITH UTILITY COMPANY.
 4. PROVIDE CAT5E CONNECTION BACK TO OWNERS LOCAL AREA NETWORK.



2 METERING SYSTEM ONE-LINE DIAGRAM
 SCALE: NTS
 NOTE:
 ONE-LINE IS TYPICAL FOR ALL UNITS. SEE SITE PLAN FOR EXACT QUANTITY OF UNITS.

LANDIS CONSULTING
 Salem
 503-584-1576
 www.landisconsulting.com



In the event conflicts are discovered between the original signed and sealed documents prepared by the Architect and/or their Consultants, and any copy of the documents, transmitted by mail, fax, electronically or otherwise, the original signed and sealed documents shall govern.

JOB NO. 2024.0021
 DATE APRIL 19, 2024
 DRAWN SR
 REVISIONS
 ADDENDUM #2
 04.29.2024



ARCHITECTURE COMMUNITY
 1100 Liberty Street SE
 Suite 200
 Salem, OR 97302
 P: 503.581.4114
 www.ccocog.com

WEST VALLEY HOUSING AUTHORITY
 PIONEER VILLAGE COMMUNITY CENTER

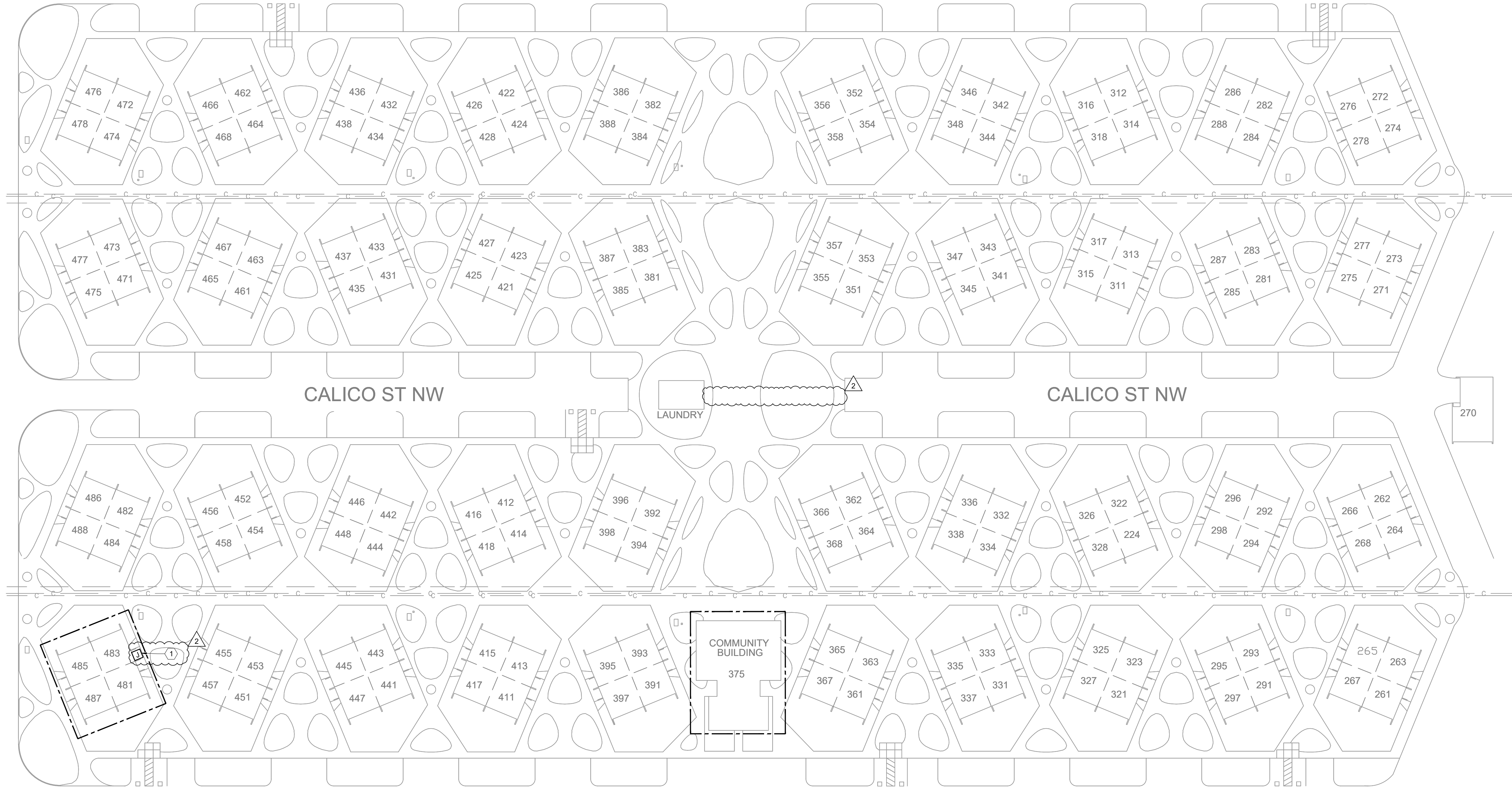
Metering System One-Line Diagram

3060 CENTER ST NE
 SALEM, OR 97301

SHEET
E0.2

SHEET KEY NOTES
 1. TYPICAL METER ENCLOSURE LOCATION. METER ENCLOSURE SHALL BE INSTALLED ON SITE OF BUILDING NEAREST THE COMMUNITY BUILDING.

CAMEO ST NW



CALICO ST NW

CALICO ST NW

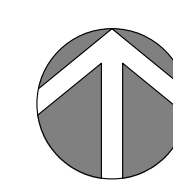
LAUNDRY

COMMUNITY BUILDING

TAYBIN RD NW

5TH AVE NW

1 ELECTRICAL SITE PLAN
 SCALE: 1" = 40'
 0' 10' 20' 40'



LANDIS CONSULTING
 Salem
 503-584-1576
 www.landisconsulting.com



In the event conflicts are discovered between the original signed and sealed documents prepared by the Architect and/or their Consultants, and any copy of the documents transmitted by mail, fax, electronically or otherwise, the original signed and sealed documents shall govern.

JOB NO. 2024.0021

DATE APRIL 19, 2024

DRAWN SR

REVISIONS
 ADDENDUM #2
 04.29.2024



ARCHITECTURE COMMUNITY
 1100 Liberty Street SE
 Suite 200
 Salem, OR 97302
 P: 503.581.4114
 www.acccog.com

WEST VALLEY HOUSING AUTHORITY
 PIONEER VILLAGE COMMUNITY CENTER

Electrical Site Plan

3060 CENTER ST NE
 SALEM, OR 97301

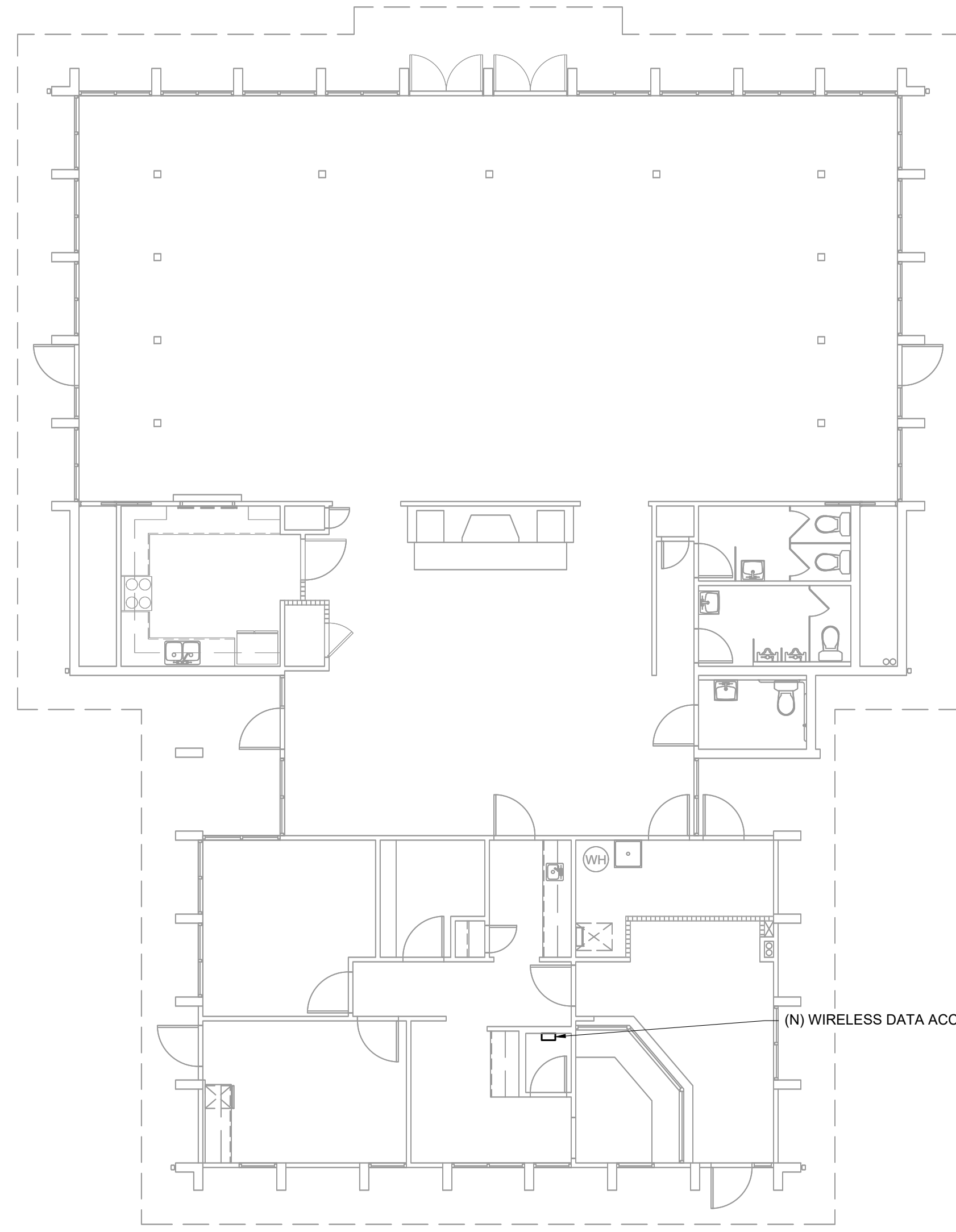
SHEET
E1.1

GENERAL SHEET NOTES

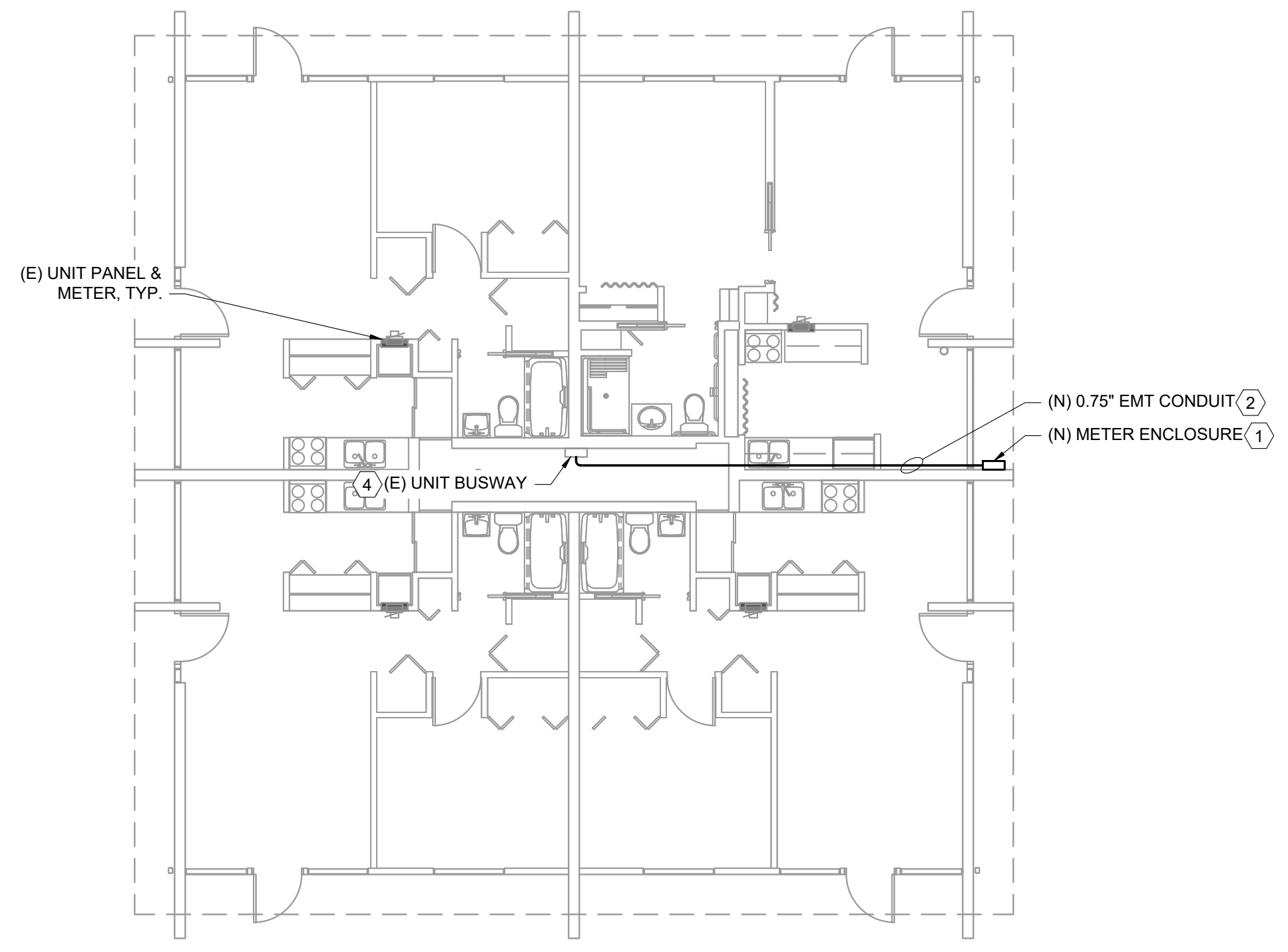
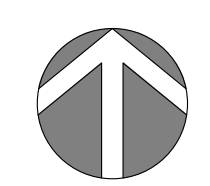
1. MINI-METERS HAVE INTEGRAL TRANSMITTER AND ACT AS MESH NETWORK. CONTRACTOR SHALL VERIFY CONNECTIVITY OF EACH METER TO MESH NETWORK AFTER INSTALLATION IS COMPLETE. IF CONTRACTOR DISCOVERS "DEAD" ZONES IN THE MESH NETWORK, THE ENGINEER AND OWNER SHALL BE NOTIFIED IMMEDIATELY FOR A SOLUTION.
2. LAYOUT SHOWN FOR TYPICAL UNIT. EXTERIOR METER ENCLOSURE SHALL BE MOUNTED ON SIDE OF UNIT CLOSEST TO THE COMMUNITY BUILDING IN THE CENTER OF THE COMPLEX.

SHEET KEY NOTES

1. NEW MINI-METERS TO BE INSTALLED IN NEMA 3R ENCLOSURE MOUNTED HIGH ON STEM WALL NEAR EAVE. 0.75" CONDUIT EMT CONDUIT SHALL BE ROUTED FROM NEW ENCLOSURE TO EXISTING BUSWAY MOUNTED IN THE MECHANICAL CORE OF EACH 4-PLEX UNIT FOR CT WIRING.
2. ROUTE NEW 0.75" CONDUIT FROM EXTERIOR ENCLOSURE UP INTO THE ACCESSIBLE ATTIC SPACE THAN OVER TO THE MECHANICAL CORE AND DOWN INTO THE EXISTING BUSWAY.
3. PROVIDE 120V CONNECTION AND CAT5E CONNECTION TO LOCAL NETWORK. COORDINATE CAT5E CONNECTION WITH OWNER.
4. INSTALL NEW SOLID CORE CT'S ON EACH PANEL FEEDER TAP WIRING INSIDE EXISTING BUSWAY ENCLOSURE. COORDINATE DE-ENERGIZING OF UNIT WITH UTILITY COMPANY.

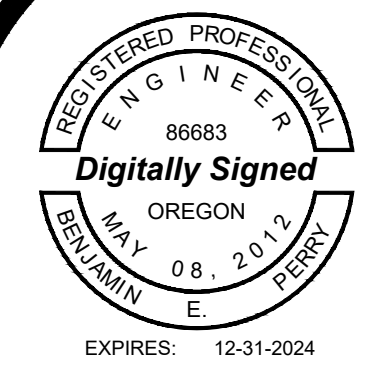


1 COMMUNITY CENTER ELECTRICAL PLAN
SCALE: 1/8" = 1'-0"



2 TYPICAL UNIT ELECTRICAL PLAN
SCALE: 1/8" = 1'-0"

LANDIS CONSULTING
Salem
503-584-1576
www.landisconsulting.com



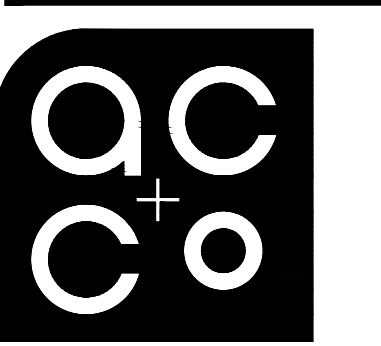
In the event conflicts are discovered between the original signed and sealed documents prepared by the Architect and/or their Consultants, and any copy of the documents, transmitted by mail, fax, electronically or otherwise, the original signed and sealed documents shall govern.

JOB NO. 2024.0021

DATE APRIL 19, 2024

DRAWN SR

REVISIONS
ADDENDUM #2
2 04.29.2024



ARCHITECTURE COMMUNITY
1100 Liberty Street SE
Suite 200
Salem, OR 97302
P: 503.581.4114
www.acco.com

WEST VALLEY HOUSING AUTHORITY
PIONEER VILLAGE COMMUNITY CENTER

Community Center - Electrical Plans

3060 CENTER ST NE
SALEM, OR 97301

SHEET
E2.1